

Stemlock Structural Rivets

PURCHASE PARTNERS



The Stemlock is an advanced structural fastening solution that has among the highest shear and tensile values available because the mandrel is locked into the shear plane. The internal locking mechanism insures positive mandrel retention and will break flush with the head. The Stemlock is designed to form a bearing surface flange at the rearside of the substrate. This rear flange is perfect for thin sheet or imperfect holes offering impressive clamp up forces without deforming the substrate.

AVAILABLE MATERIALS:

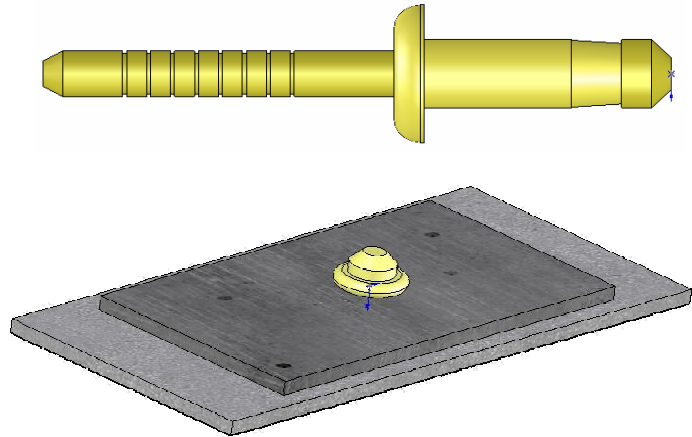
- All Steel
- All Aluminum

FEATURES:

- High Shear & Tensile Strength
- Internally Locked Mandrel
- Rear Bearing Surface Flange
- Vibration Resistant
- Weather Resistant
- Won't deform substrate materials

AVAILABLE HEAD STYLES:

- Dome



Dia. (nom)	Grip Range	Part Number	Length	Head Diameter	Head Height	Shear	Tensile	Hole Size
1/4"	.068 - .138	SL- B_-0812	.539	.527	.105	see below	see below	.264-.272
	.110 - .189	SL- B_-0813	.590					
	.132 - .211	SL- B_-0814	.612					
	.189 - .268	SL- B_-0155	.669			see below	see below	
	.268 - .346	SL- B_-0817	.747					
	.295 - .374	SL- B_-0818	.775					
	.346 - .425	SL- B_-0819	.828					
.425 - .504	SL- B_-0821	.908	see below	see below				
nom.	min. - max.		max.	max.	max.	lbs/f	lbs/f	Drill #
A			L	B	C			

Rivet Material Mandrel Material	SL-SBS Series		SL-ABA Series	
	Steel	Steel	Aluminum	Aluminum
1/4"	3820	2090	1500	7000
	Shear	Tensile	Shear	Tensile

Phone 314-567-8585