

Checkmate - 2 Piece Male/Female Rivets



The Checkmate Rivet is a two piece male/female component that offers a near flush installation on both sides of the workpiece. The backside potrosion typical on blind fasteners is eliminated and the large flange offers increased bearing surface to both sides. The Checkmate product line can be used in grips from .625 to over 4.00" long and each size has a very wide grip range to compensate for variations in substrate material thicknesses. Can be used as a pivot or a riveted joint. Not a truly blind fasteners, access to both sides of the workpiece during installation is necessary.

PURCHASE PARTNERS

AVAILABLE MATERIALS:

- All Aluminum
- All Steel
- Aluminum Steel

FEATURES:

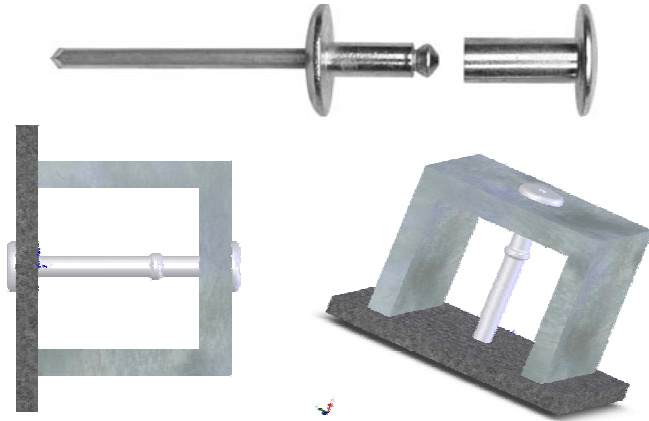
- Large Flange on Both Sides
- No sharp edges
- Large Bearing Surface
- Extra Wide Grip
- Vibration Resistant

AVAILABLE HEAD STYLES:

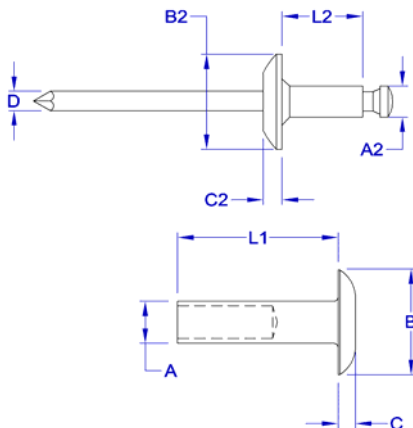
- Large Flange

APPLICATIONS:

- Pivot Points, Tubing, Brackets, Rotational Molded Products,
- Commercial Child Play Systems, Scissor Gates, Fences, Hinges



Female Diameter (nom)	Grip Range	Size Code	Female Length	Head Diameter x2	Head Height x2	Male Length	Male Body Ø	Suggested Hole Size
3/16"	3/16" size is available upon request.							.192-.196 #11
	.625 - .750	8-12CM	.580	.625	.100	.454	.187	1/4" Nominal #F
	.750 - .875	8-14CM	.695			.608	.187	
	.875 - 1.125	8-18CM	.820			.608	.187	
	1.125 - 1.375	8-22CM	1.070			.608	.187	
	1.375 - 1.625	8-26CM	1.320			.608	.187	
	1.625 - 1.875	8-30CM	1.570			.608	.187	
	.875 - 2.125	8-34CM	1.820			.608	.187	
	.125 - 2.375	8-38CM	2.070			.608	.187	
	.375 - 2.625	8-42CM	2.320			.608	.187	
	.625 - 2.875	8-46CM	2.570			.608	.187	
	.875 - 3.125	8-50CM	2.820			.608	.187	
	.125 - 3.375	8-54CM	3.070			.608	.187	
	.375 - 3.625	8-58CM	3.320			.608	.187	
	.625 - 3.875	8-62CM	3.570			.608	.187	
nom.	min. - max.		max.	nom.	nom.	nom.	nom.	Drill #
A			L1	B, B2	C, C2	L2	A2	



Typical Strength			
	ABA	SBS	ABS
Rivet Material	Aluminum	Steel	Aluminum
Mandrel Material	Aluminum	Steel	Steel
3/16"	n/r	n/r	n/r
1/4"	1.1	2.1	2.0
	Tension	Tension	Tension
KiloNewtons (kN)			

- 1) Tension and Shear values are heavily dependent on hole size and grip range.
- 2) Shear loads should always be less then tension loads when using this fastener.

Phone 314-567-8585